

# JA Finance Park<sup>®</sup> Advanced Virtual

*JA Finance Park* helps students build a foundation upon which they can make intelligent financial decisions that last a lifetime, including decisions related to income, expenses, savings, and credit. The program comprises several teacher-led, in-class lessons and a variety of optional, extension activities. The experience culminates in a hands-on, online budgeting simulation that is supported by volunteers. The *JA Finance Park* Virtual simulation has been fully redeveloped, with a brand-new Advanced experience geared towards high school students and/or those with prior personal finance knowledge.

## ADVANCED VIRTUAL SIMULATION HIGHLIGHTS

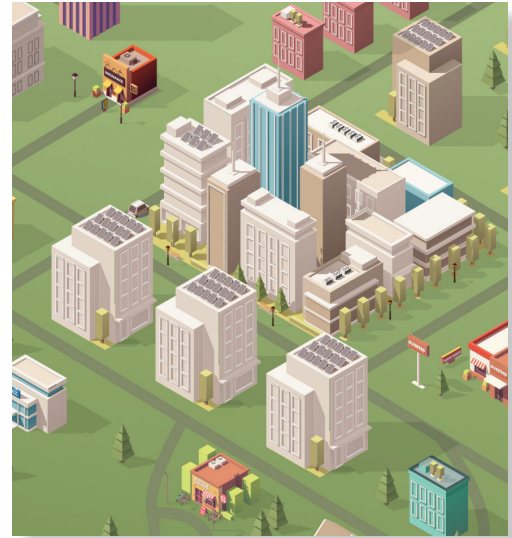
- Choose their own “adult adventure” by selecting their persona based on career and education choices.
- Deep dive into financial consequences of life choices and decisions impacting long-term goals.
- Navigate financial decisions through various life stages and budget beyond one month.

The Advanced program has a primary focus of the JA Financial Literacy Pathway and a secondary focus of the Work and Career Readiness Pathway and can be used in Grades 9–12. The program may receive 12 or more ICH based on delivery of the optional content; the program is primarily teacher-led but requires volunteers.

## SAMPLE SIMULATION ACTIVITIES

In the new Advanced Level Virtual simulation, students will:

- Select their own avatar and interests.
- Review information about career clusters to select their career path and education.
- Set up to three savings goals for future items such as homeownership or dream car.
- Research, shop, and pay for various categories.
- Make financial decisions across multiple life stages.
- Choose their own future as it relates to marriage, children, and pets.
- Track progress of their budgeting, spending, and saving through a financial health meter.



---

## VOLUNTEER ENGAGEMENT

- Flexible options to participate virtually:
  - Deliver activities using tailored volunteer guides, or assist with curriculum sessions.
  - Assist and support students during the simulation.
- Minimum of 3 hours required